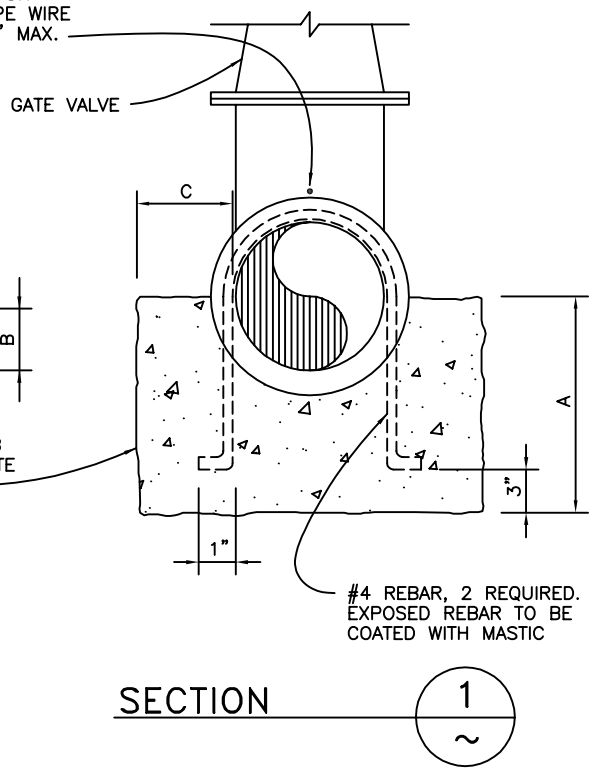


CONCRETE PAD DIMENSIONS			
VALVE SIZE	A	B	C
6"	9"	3"	6"
8"	12"	4"	8"
10"	16"	6"	10"



**NOTES:**

1. CONCRETE PAD SHALL BE Poured UNDER ALL GATE VALVES.
2. COAT ALL BONNET BOLTS, GLAND, GLAND BOLTS AND STEM WITH BITUMINOUS PAINT, SEE SPECS.
3. ON MAINS WHERE VALVES ARE TO BE INSTALLED ADJACENT TO TEES OR CROSSES, THE VALVES SHALL BE FLG x MJ WITH FLANGED END BOLTED DIRECTLY TO THE TEE OR CROSS.
4. IN-LINE VALVES MAY BE FLG x FLG WITH ADAPTERS OR MJ x MJ ENDS.
5. CENTERING BLOCK (7.5" DIA 1 LB POWDER COATED) .

REV. 07/04

Dublin San Ramon Services District

DATE  
8/23/66

GATE VALVE INSTALLATION  
10" GATE VALVE AND SMALLER

DESIGNED  
B M D

SIGNED COPY ON FILE AT DISTRICT OFFICE

DRAWING  
W-13