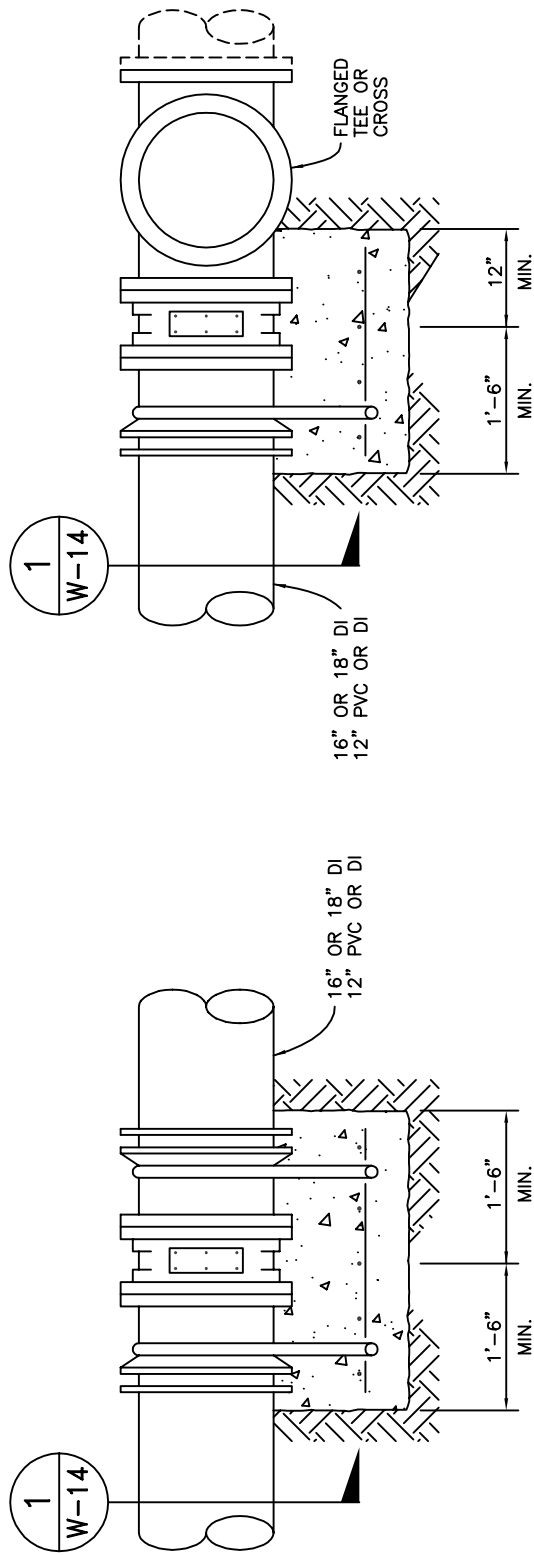


REV. 07/04

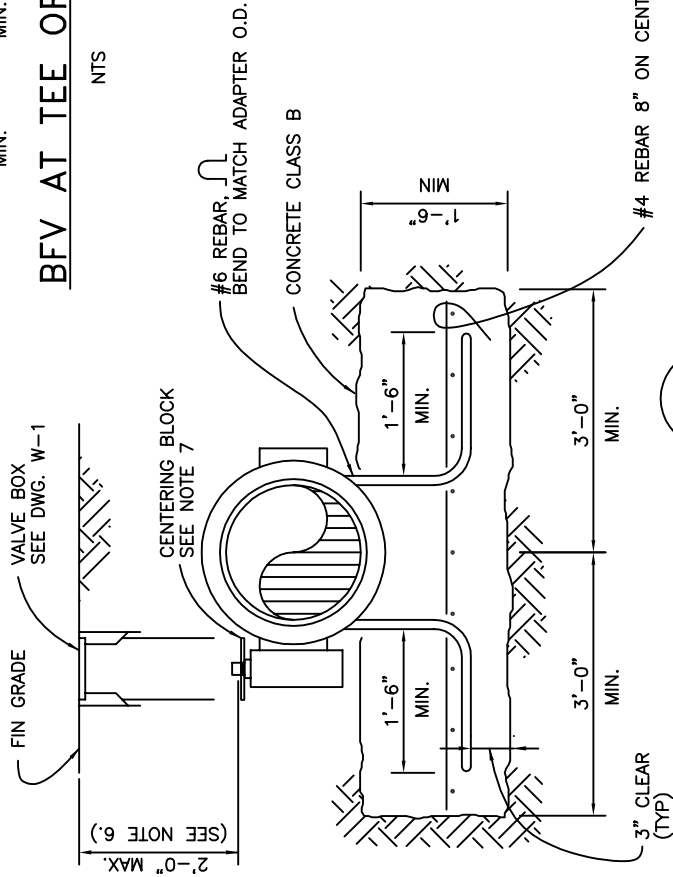


IN-LINE BFV

NTS

BFV AT TEE OR CROSS

NTS



SECTION

NTS

NOTE:

1. ALL REBAR TO HAVE 3 INCH MINIMUM CONCRETE COVER.
2. CONCRETE TO BE PLACED AGAINST UNDISTURBED SOIL OR COMPACTED DRAINROCK.
3. # 6 REBAR TO BE EXPOSED ABOVE CONCRETE IS TO BE WRAPPED IN SCOTCHWRAP # 50 MOULDING TAPE AND COATED WITH BITUMASTIC BEFORE INSTALLATION.
4. ON MAINS WHERE VALVES ARE TO BE INSTALLED ADJACENT TO TEES OR CROSSES, THE VALVES SHALL BE FLG x MJ WITH FLANGED END BOLTED DIRECTLY TO THE TEE OR CROSS.
5. IN-LINE VALVES MAY BE FLG x FLG WITH ADAPTERS OR MJ x MJ ENDS.
6. ADD EXTENSION SLEEVE WHEN DEPTH EXCEEDS 2'0".
7. CENTERING BLOCK (7.5" DIA 1 LB POWDER COATED).

Dublin San Ramon Services District

DATE
MAY, 1987

BUTTERFLY VALVE INSTALLATION
12" TO 18" BFV

DESIGNED
R M R

SIGNED COPY ON FILE AT DISTRICT OFFICE

DRAWING
W-14