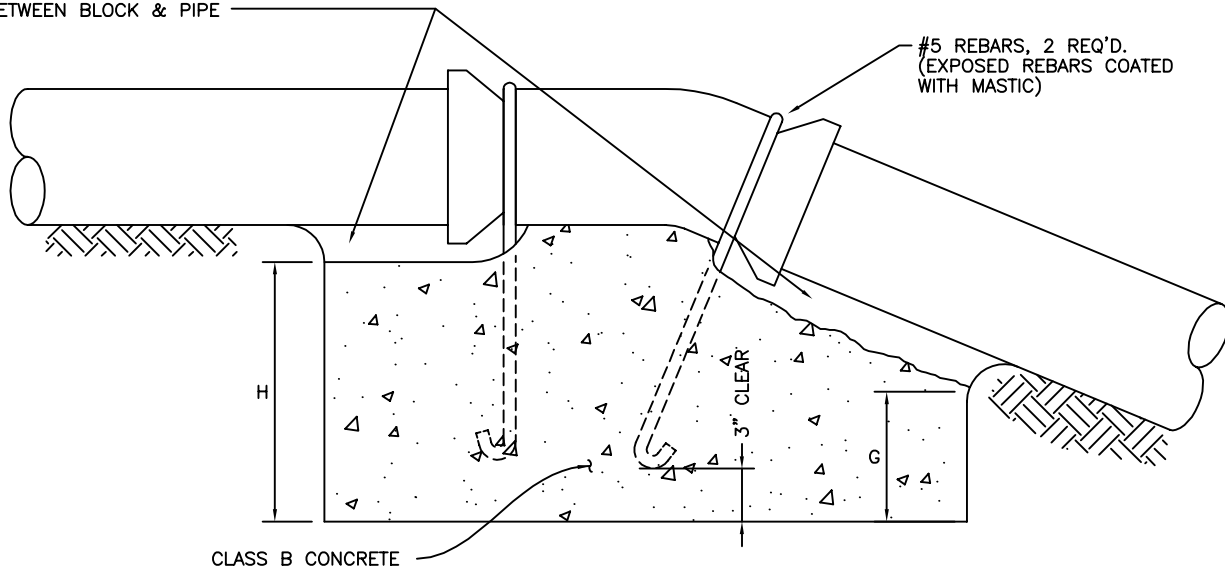


PLAN

TAMP BACKFILL MATERIAL BETWEEN BLOCK & PIPE



ELEVATION

THRUST BLOCK DIMENSIONS ~ UPWARD THRUST

PIPE SIZE	11-1/4° BEND				22 1/2° BEND				45° BEND			
	L	W	H	G	L	W	H	G	L	W	H	G
4"	2'-0"	2'-0"	1'-0"	9"	2'-0"	2'-0"	1'-0"	9"	2'-0"	2'-0"	2'-0"	6"
6"	2'-0"	2'-0"	1'-0"	9"	2'-0"	2'-0"	2'-0"	1'-0"	3'-0"	2'-0"	2'-0"	6"
8"	2'-0"	2'-0"	1'-0"	9"	3'-0"	2'-0"	2'-0"	1'-0"	4'-6"	2'-0"	3'-0"	6"
10"	3'-0"	2'-0"	2'-0"	1'-8"	5'-0"	3'-0"	2'-0"	1'-0"	6'-0"	2'-0"	3'-8"	8"
12"	3'-0"	2'-0"	2'-0"	1'-8"	5'-0"	3'-0"	2'-0"	1'-0"	7'-0"	2'-6"	4'-0"	8"

REV. 08/01

Dublin San Ramon Services District	DATE MAY 1987
CONCRETE THRUST BLOCKS FOR VERTICAL BENDS	DESIGNED SAD
SIGNED COPY ON FILE AT DISTRICT OFFICE	DRAWING W-3