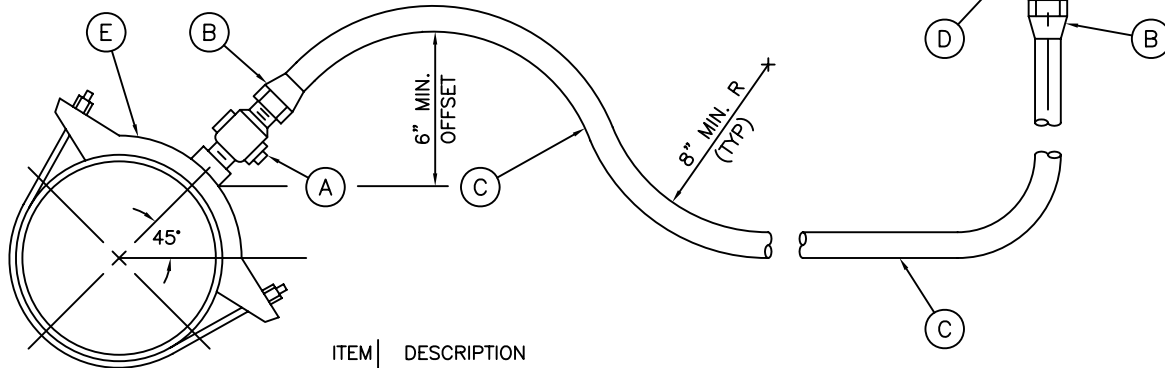


SERVICE WITH 90° TAP  
W/ POLYETHYLENE



SERVICE WITH  
COPPER

ITEM	DESCRIPTION
A	CORPORATION STOP (MUELLER 300 SERIES, MCDONALD 4701 BQ, OR EQUAL)
B	COMPRESSION JOINT
C	TYPE K COPPER TUBING
D	ANGLE CURB STOP W/WING LOCK - BRONZE (MUELLER 300, MCDONALD 4602 BT, SERIES OR EQUAL)
E	SERVICE SADDLE - BRONZE (ROCKWELL 323, MUELLER 16100, MCDONALD 3825, OR APPROVED EQUAL)
F	FACE OF CURB MARKED "W"
G	POLYETHYLENE TUBING W/TRACER WIRE

NOTES:

1. MINIMUM COVER FOR THE SERVICE LINE SHALL BE 36 INCHES.
2. MINIMUM BENDING RADIUS FOR COPPER TUBING SHALL BE 8 INCHES.
3. SERVICE LINE SHALL REST ON UNDISTURBED EARTH.
4. STAINLESS STEEL INSERT STIFFENERS SHALL BE USED AT CORP. AND ANGLE STOPS IN POLYETHYLENE SERVICE LINES WHEN RECOMMENDED BY THE FITTING MANUFACTURER.
5. METER BOXES FOR COMMERCIAL/INDUSTRIAL BUILDINGS, OR BUILDINGS WHICH REQUIRE BACKFLOW PREVENTION DEVICES, SHALL HAVE A CONCRETE COLAR AROUND THE METER BOX.
6. COPPER SERVICES MUST BE LINED WITH 8mm POLYETHYLENE WRAP.
7. ANGLE CURB STOP SHALL BE 1" X 1" MINIMUM.

REV. 05/06

Dublin San Ramon Services District

DATE  
DEC 1982

1" SERVICE INSTALLATION

DESIGNED  
SRH

SIGNED COPY ON FILE AT DISTRICT OFFICE

DRAWING  
W-7