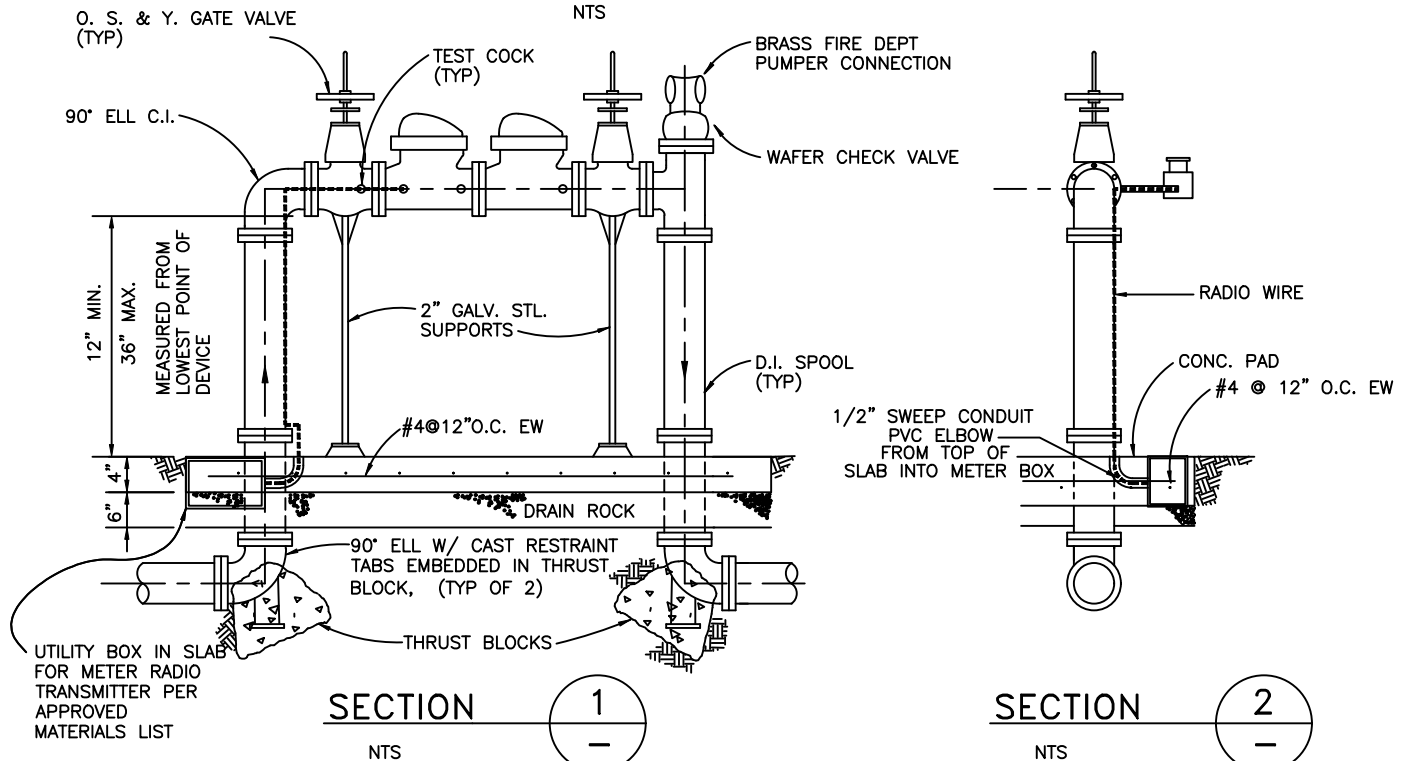


PLAN



NOTES:

1. DOUBLE DETECTOR CHECK ASSEMBLY SHALL BE FACTORY ASSEMBLED COMPLETE. WITH METER AND DETECTOR CHECKS AND SHALL BE ON APPROVED MATERIALS LIST. THE DETECTOR METER SHALL BE SUPPLIED WITH A RADIO-READ METER. THE METER INTERFACE UNITS SHALL FOR AMR SYSTEMS USING ENCODED REGISTERS WITH PROFILE PLUS LOAD PROFILING CAPABILITY AND SHALL BE ON APPROVED MATERIALS LIST OR APPROVED EQUAL.
2. HOSE THREADS SHALL MATCH FIRE DEPT HOSE CONNECTORS (NST/NH).
3. INSTALL AS REQUIRED.
4. PUMPER CONNECTION MUST BE INSTALLED FACING STREET WITHOUT OBSTRUCTION.
5. THIS ARRANGEMENT REQUIRES FIRE DEPT APPROVAL.
6. RADIO WIRE TO BE FIRMLY AFFIXED TO PIPING WITH WIRE TIES.
7. TRANSMITTER TO BE SPLICED TO INCOMING WIRES WITH WATER PROOF CONNECTORS.
8. METER SHALL BE SET TO READ IN CUBIC FEET.
9. DEVICE SHALL BE TESTED BY CERTIFIED TESTER. TEST REPORT SHALL BE SUBMITTED TO DSRSD.
10. ALL BOLTS SHALL BE STAINLESS STEEL TYPE 316, ANTI-SEIZE LUBRICANT SHALL BE APPLIED TO BOLT THREADS. POLYWRAP ALL FERROUS PIPE AND FITTINGS.
11. CONCRETE PADS SHALL BE FORMED TO NEAREST CURB OR SIDEWALK ELEVATION WITH A FINE BROOM FINISH.
12. INLET AND OUTLET PIPE RISERS SHALL BE WRAPPED WITH 10 MIL PVC TAPE OR FOAM CLOSET FLANGE WRAP WITHIN CONCRETE PAD.

Dublin San Ramon Services District

REVISION DATE
JUN 2025

DOUBLE DETECTOR CHECK FOR 2" – 10" FIRE LINES
ABOVE GROUND INSTALLATION (OPTIONAL)

REVISED BY
RM

SIGNED COPY ON FILE AT DISTRICT OFFICE

DRAWING
W-23A